



ALARM LOCK

345 Bayview Avenue, Amityville, New York 11701

For Sales and Repairs 1-800-ALA-LOCK

For Technical Service 1-800-545-9440

or visit us at <http://www.alarmlock.com>

(Note: Technical Service is for security professionals only)

Publicly traded on NASDAQ Symbol: NSSC

© ALARM LOCK 2018



IMPORTANT! - Before Installing DL-Windows V5.5.3 Please Read This

WI2330LF 11/18

DL-Windows version 5.5.3, REQUIRES Microsoft® SQL Server® 2012 Express!

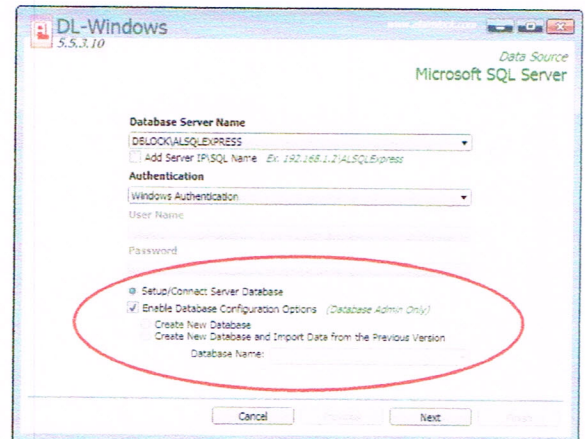
Before installing or upgrading to **DL-Windows version 5.5.3**, you **MUST** either have **Microsoft® SQL Server® 2012 Express** already installed or install it using the following steps:

1. On the installation CD (or inside the WinZip file that was downloaded from the Alarm Lock website), open the folder named "**SqlExpress2012**".
 - Run the file appropriate for your computer. For example, for 64-bit computers, run the file named "SQLEXPRESS_x64_ENU.exe".
 - Select "**New**" SQL Server installation type.
 - Be sure to enter the following instance name using the "**Instance Configuration**" screen:
ALSQLEXPRESS2012
 - Be sure to enter the above referenced instance name in both the "**Named Instance**" and "**ID**" fields. *Be sure all case-sensitive characters are typed correctly!*
2. Migrate your older database to the current version (5.5.3) using the DL-Windows **Database Configuration** utility:

- Click **Start > All Programs > DL-Windows 5 > Database Configuration**

For this step, DL-Windows will still be using the previous version of SQL Server, i.e. version 2008.

- Check "**Enable Database Configuration Options**".
- Select "**Create New Database and Import Data from the Previous Version**".
- Select your older database version (likely your previous version) from the "**Database Name**" pull-down.
- Click "**Next**", then click "**Yes**", then click "**Next**", then click "**Finish**".



3. Open DL-Windows and back up your database.
 - Click **Tools > Backup Database**.Save the backup file to a folder; for example: C:\DB-Backup\AlarmLockv5.5.3.bak.
4. Open the **DL-Windows Database Configuration Utility** and select the database instance "ALSQLEXPRESS2012" using the "**Server Name**" pull-down.
5. Open DL-Windows and restore your previously saved database from the folder created in step 3.
 - Click **Tools > Restore Database**.